

CONFLENT-CANIGÓ WALKS

EUS: the path to the SAINT-JACQUES de CALAHONS CHAPEL

This is a magnificent out-and-back walk from Eus, which has been designated as one of the "most beautiful villages of France". The hills which the walk crosses have a semi-wild aspect, but the land here had in fact been farmed for centuries prior to recent times. The walk heads for the "hermitage" of Saint-Jacques de Calahons, which is an isolated chapel of medieval origin, beautifully-restored. You first see the chapel from a distance on the upper part of the route.

Mountain code of conduct

- Check the weather forecast
- Go well equipped: with walking shoes or boots, a sunhat and some drinking water
- Keep to waymarked routes
 - Respect fauna and flora
 - Carry out all your litter
- Act in accordance with signs and notices
- Leave gates and fences as you find them
 - Make no unnecessary noise
 - Don't light fires

Duration: 3h00 (plus stops)

Distance: 8.3 km

Waymarks: yellow

Difference in altitude between highest and lowest points: 190 metres

You climb in total: 260 metres

Level of difficulty: Not difficult (but there are some stony sections, and the walk is not advisable on very hot days)

ROUTE DESCRIPTION

Start: Car park at upper entrance to the village of Eus – altitude 339m

Eus can be reached either via the D24 road, from the N116 main road between Prades and Marquixanes, or via the D35 road from the "Super-U" roundabout in Prades. In either case, after crossing the Têt river, turn right, and not long after, turn left to follow the road which winds up to the higher part of Eus.

1 From the start, go back down the road which you have just come up. Where the road bends sharply to the left, go to the right, down the "Camí de Rogeres". There are houses on either side.

At the end of the tarmac section of this road, continue straight ahead, on an unsurfaced track.

2 The track turns to the left and crosses a bridge over the "Còrrec de Sant Vincenç" (a stream bed which will probably be dry, unless there has been rain in the recent past). Keep to the track as it winds around the shoulder of a hill.

3 At a bifurcation of tracks, take the track which goes to the right. Shortly afterwards, where the track ends, at a path fork, take the path which goes to the right. Keep to the path as it traverses a steep valley-side.

4 Descend to and cross the "Còrrec de les Teixoneres", another stream bed which, again, will probably be dry.

Shortly afterwards, the path bends to the left and climbs quite steeply, in woodland.

5 You soon emerge into an open area. This is a former vineyard. Go to the right and follow the waymarked route along the edge of this abandoned vineyard.

At the top of this area, the path bends to the left, then turns left again, with the former vineyard now immediately on your left.

6 You come to a track. But don't go along that track. Instead, turn sharp right and go up a waymarked path which climbs through an area with oak trees.

- Emergency telephone numbers: 112 (or 18 - the *pompiers* fire and emergency service)
- Map: IGN 2348 ET Prades

7 At a path fork, ignore the path which goes to the right and continue on the path which goes straight ahead.

8 After a fairly long climb, the slope levels out a little. You then come to an imposing oratory on an open part of a ridge. Straight ahead, you can just see the Saint-Jacques de Calahons chapel.

Looking back from here in the direction from which you have just come, there is a fine view to the Canigó massif, and, to the right, to the Coronat and Madres massifs.

Continue along the path, which now winds across the hillside. The Mediterranean vegetation in this semi-open uncultivated area is known as "garrigue".

The path bears to the left and crosses another stream bed (again, probably dry), on a small footbridge.

9 You then almost immediately arrive at the chapel/hermitage of Saint-Jacques de Calahons.

Return to the start by the same route.

Office de Tourisme Conflent Canigó

Tél : 04 68 05 41 02

info@tourisme-canigou.fr

www.tourisme-canigou.com

(Translation 2019 by A.M)

Adresses et informations utiles

Office de Tourisme Conflent Canigó
Tel. 04 68 05 41 02
www.tourisme-canigou.com

Les Balises

	GRØ	GRØP	PR	PR
Bonne Direction Continuité				
Changement de Direction Tourne à Gauche				
Changement de Direction Tourne à Droite				
Mauvaise Direction				

Bonne Conduite en Montagne

- Se renseigner sur les conditions atmosphériques
- Être bien équipé : chaussures, chapeau, eau...
- Rester sur les sentiers balisés
- Respecter la Faune et la Flore
- Ramener ses déchets
- Respecter la réglementation affichée
- Ne pas oublier de refermer les barrières
- Rester silencieux et discret
- **- Ne pas faire de feu**

Météo : 08 99 71 02 66
Urgences : 112 ou 15
Pompiers : 18

Vous rencontrez un problème sur nos sentiers ? Signalez-le sur les fiches dédiées dans les différentes antennes de l'Office de Tourisme ou sur sentinelles.sportsdenature.fr

SENTINELLE, NE PARTEZ PAS SANS...

La nouvelle application SURICATE est disponible !



sentinelles.sportsdenature.fr



Eus
Chemin de
Saint-Jacques de Calahons



Distance : **8,3 km**

Temps : **3h00 (Hors arrêts)**

Dénivelé Positif : **190 m**

Dénivelé Positif Cumulé : **260 m**

Difficulté : **Facile**

Balisateur : **Jaune**



Panoramas et Patrimoine

Sentier quelquefois rocailleux, à éviter par fortes chaleurs.

Une magnifique balade depuis un des Plus Beaux Villages de France, à travers paysages agricoles et qui dévoilera au fil des pas l'Ermitage de Saint-Jacques de Calahons.

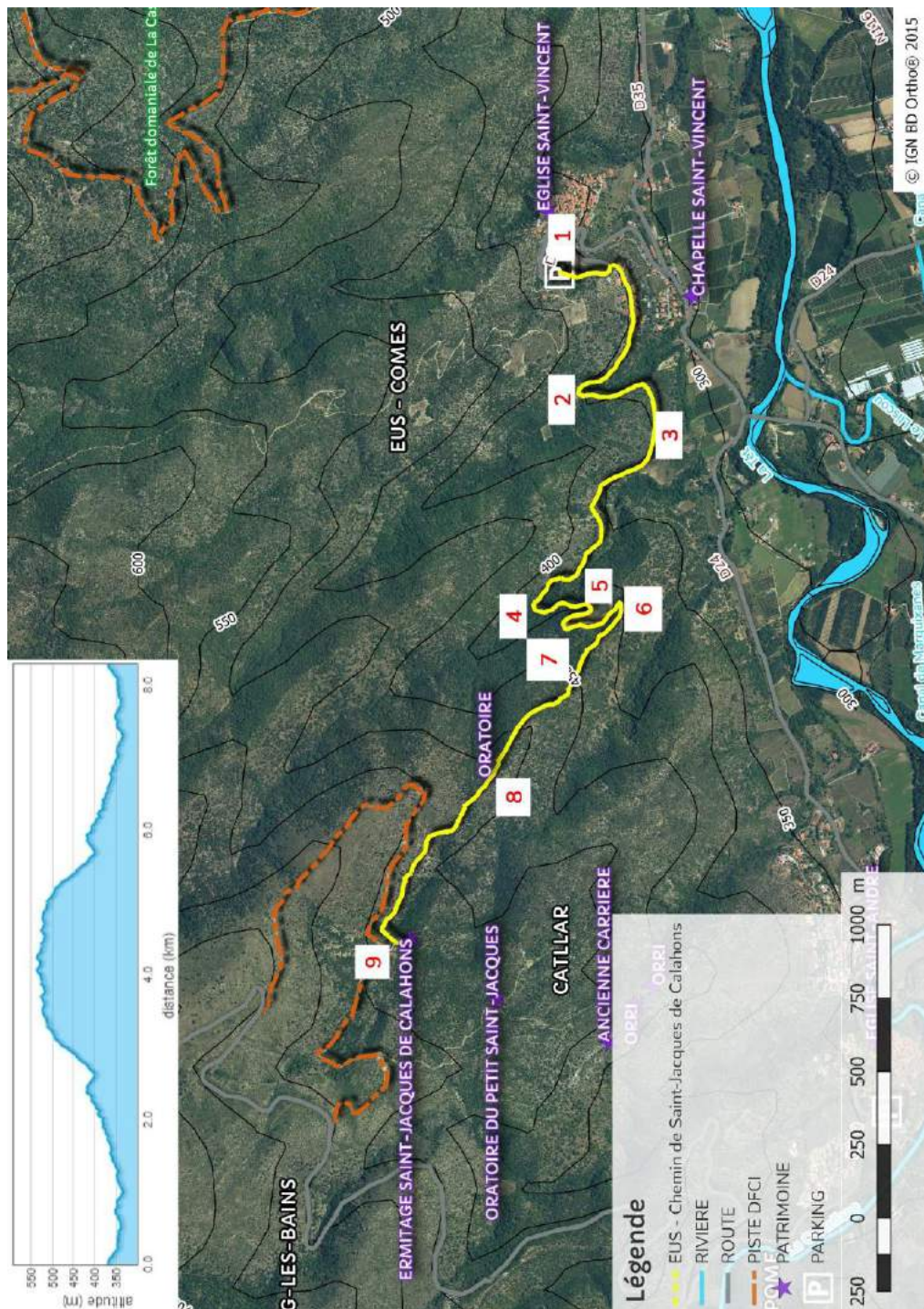


Photo-reportez en taguant vos plus belles photos de randos **#justcanigo** sur Instagram



Photos visibles sur notre page Facebook, devenez fan en flashant le QR code ci-contre ou sur facebook.com/TourismeConflentCanigo





Carte IGN 1/25^{ème} 2348 ET

Départ Parking visiteurs - altitude 339 m. –

Accès : depuis la N116, prendre la D24, parking avant l'arrivée en haut du village.

- 1** Du parking, descendre quelques mètres sur la route, puis, au premier virage en épingle, quitter la route et emprunter le Cami de Rogeres sur votre droite. Suivre la rue jusqu'au bout et continuer sur la piste.
- 2** Tourner sur la gauche et franchir le pont sur le Còrrec de Sant Vincenç.
- 3** A la bifurcation des pistes, rester sur la droite puis, au bout de celle-ci, emprunter le sentier main droite.
- 4** Franchir le Còrrec de les Teixoneres et continuer sur le sentier qui s'élève fortement sur quelques mètres.
- 5** Le sentier rejoint une ancienne vigne. La contourner par la droite, puis, après avoir rejoint la bordure de celle-ci, emprunter le chemin à gauche jusqu'à rejoindre une piste.
- 6** Ne pas s'engager sur la piste et prendre tout de suite à droite le chemin qui monte à travers les chênes.
- 7** Laisser le chemin qui part à droite et continuer tout droit.
- 8** Bel oratoire et belle vue sur le Canigó, le Coronat et le Madres. Le chemin s'adoucit et serpente à travers la garrigue. Continuer sur le sentier puis franchir une petite passerelle.
- 9** Ermitage Saint-Jacques de Calahons.

Le retour s'effectue par le même itinéraire.